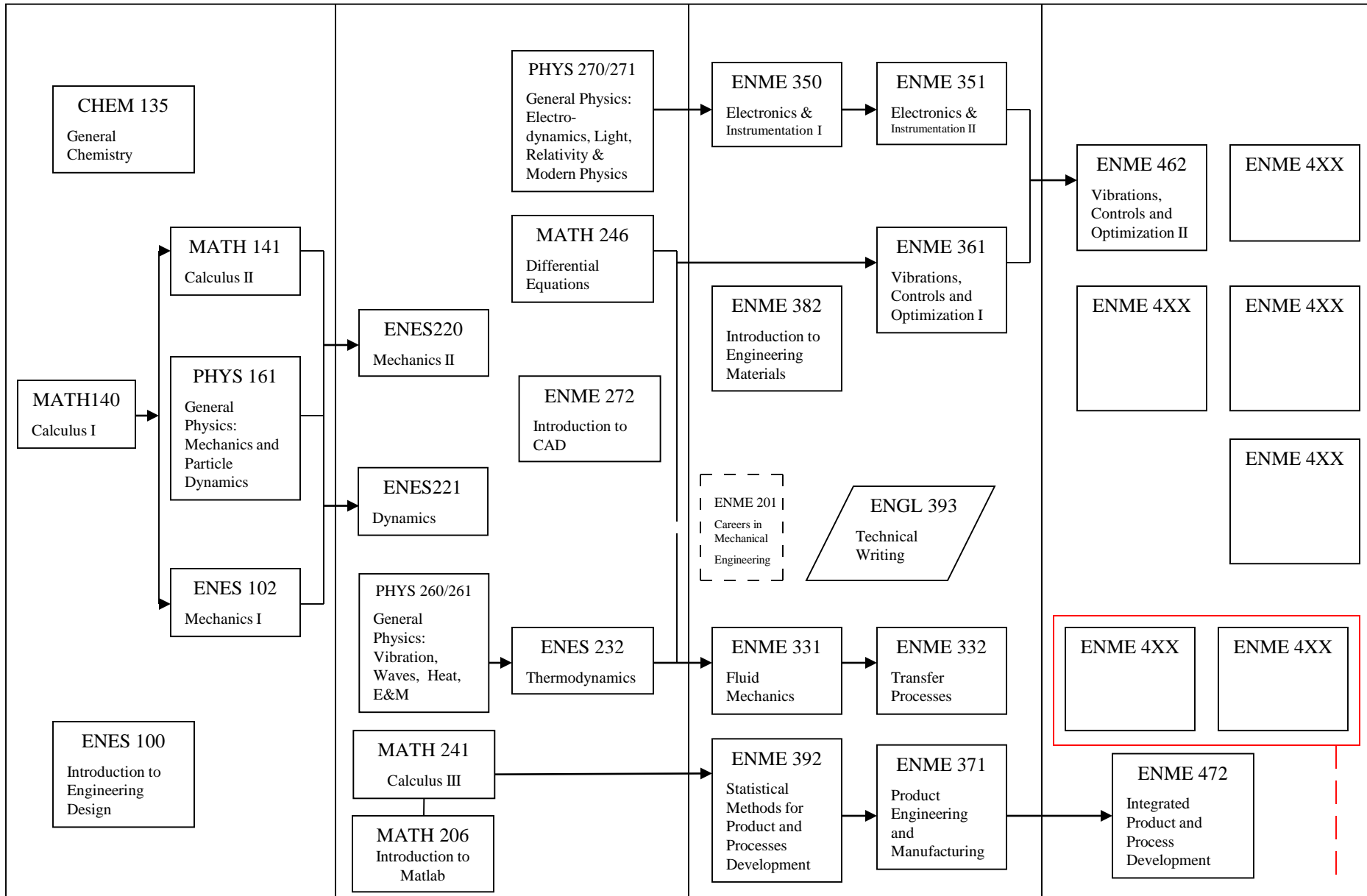


Department of Mechanical Engineering – Course Map

Revised Fall 2012 Version



(Note: You are allowed, if you wish, to take up to two electives outside of your major. These may be any 300 or 400 level courses in MATH, PHYS, COMP-SCIENCE, CHEM, BMGT or ENGINEERING.

If you take an elective outside of your major, it will also count as one of your advanced studies upper core.) Arrows indicate primary prerequisite path but for clarity, some are not shown.

HL

HA

HL/HA/HO/IE*

SH

SB

SB/IE*

D

(*only one IE course allowed)